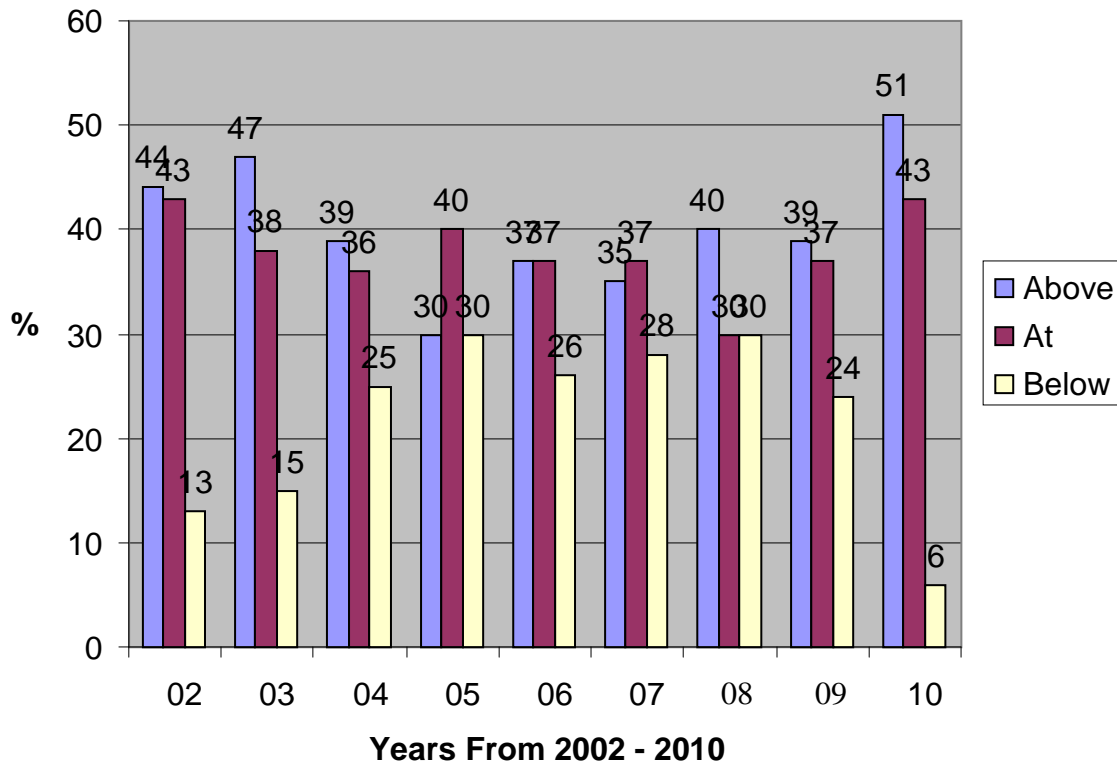




<b>Target Group 2 – students identified as a risk of not achieving in reading through 5 year testing T3,4,2009, T1,2010</b>				
<b>Focus Area – Reading</b>		<b>Gender - both</b>	<b>Ethnicity - all</b>	<b>Year Groups – Y1</b>
Historical Position	Achievement Target 2010	Current Position Feb 2010	2010 Dec - Analysis Average % at Green	Recommendations 2011
In 2009 24% of students turning 6 were below the target level of Green – L12.	Goal 1 – To achieve 80% of identified target students at or above expectation (Green – L12) as measured by the six year reading level.	20 children have been identified as a risk  See list A	18/20 students achieved the target level – 90%	Identify students at risk and repeat the process in 2011
<b>2010 - Target Group 3 – students identified as a risk of not achieving in reading after 1 year at school through 6 year testing T3,4,2009, T1,2010</b>				
<b>Focus Area – Reading</b>		<b>Gender - both</b>	<b>Ethnicity - all</b>	<b>Year Groups – Y1</b>
Historical Position	Achievement Target 2010	Current Position Feb 2010	2010 Dec - Analysis Average % at Turquoise	Recommendations 2011
In 2009 24% of students turning 6 were below the target level of Green – L12.	Goal 1 – To achieve 80% of identified target students at or above Turquoise – L17 as measured by the Nov reading level after 2 years at school	20 children have been identified as a risk  See list B	19/20 students achieved the target level – 95%	Identify students at risk and repeat the process in 2011
<b>Target Group 4 – students identified as a risk of not achieving in reading through testing after 2 years at school T4,2009, T1,2010</b>				
<b>Focus Area – Reading</b>		<b>Gender - both</b>	<b>Ethnicity - all</b>	<b>Year Groups – Y1</b>
Historical Position	Achievement Target 2010	Current Position Feb 2010	2010 Dec - Analysis Average % at Gold	Recommendations 2011
In 2009 it was identified that a significant number students turning 7 were below the target level of Turquoise – L17.	Goal 1 – To achieve 80% of identified target students at or above Gold – L21 as measured by the Nov reading level by the end of 3 years at school	29 children have been identified as a risk  See list C	27/29 students achieved the target level – 93%	Refer on the 2 students who did not reach the target for appropriate support. Identify students at risk and repeat the process in 2011

### Six Year Reading Levels



Data 2002 – 2010  
 Above – Turquoise and above – Level 17 and above  
 At – Blue – Orange – Level 9 - 16  
 Below – Yellow and below – Level 8 and below

Data for 2011 will need to reflect the National Standard expectation of At being Green.

2010 results would be –  
 Below 15%  
 At 12%  
 Above 73%  
 At and Above Green 85%

List A - Students identified as a risk of not achieving in reading through 5 year testing T3, 4, 2009, T1, 2010 – target L12

Name	Level T 1, 2010	Level end T2, 2010	Diff	Level end T3, 2010	Diff	Level T4, 2010	Diff	Diff year
1 – TJ	6	12	6	17	5	18	1	12
2- TJ	5	12	7	15	3	18	3	13
3 – BB	12	15	3	16	1	18	2	6
4 - BB	6	13	7	16	3	16	0	10
5 - TP	Pre	3	3	6	3	9	3	9
6 - BB	6	13	7	16	3	16	0	10
7 - TJ	2	8	6	9	1	15	6	13
8 - TP	3	5	2	6	1	14	8	11
9 - TJ	2	5	3	7	2	14	7	12
10 - MC	7	12	5	16	4	18	2	11
11 - BB		15		left		Left		
12 - TJ	6	13	7	17	4	20	3	14
13 - BB	5	13	8	16	3	17	1	12
14 - TP	2	9	7	14	5	16	2	14
15 - AC	3	7	4	13	6	13	0	10
16 - TP	1	7	6	10	3	16	6	15
17 - AC	Pre	2	2	left		Left		
18 - TJ	2	4	2	9	5	14	5	12
19 - TP	2	12	10	15	3	17	2	15
20 - TJ	2	4	2	4	0	7	3	5

Total 20 / Maori 3 15% (School 10%) / Male 12 60%/ Female 8 40%

Comments

18/20 students reached the goal target (L12 – NS for their level).

**List B – Students identified as a risk of not achieving in reading through 6 year testing T3, 4, 2009, T1, 2010 - target L17**

Name * 09 Cohort students	6 Year Net	Level Nov 2009	Level end T2, 2010	Diff	Level end T3, 2010	Diff	Level T4, 2010	Diff	Diff year
1 - SK	8	19	22	3	22	0	22	0	2
2 – SK	10	12	17	5	20	3	22	2	10
3 - SK	1	6	11	5	12	1	12	0	6
4 – KD	14	15	22	7	22	0	22	0	7
5 – MC	12	16	18	2	21	3	22	1	6
6 – MC	13	16	19	3	22	3	22	0	6
7 – SK	11	16	20	4	20	0	22	2	6
8 * - KD	1	4	15	11	20	5	20	0	16
9 – MC	10	12	17	5	18	1	20	2	8
10 - MC	12	10	17	7	18	1	19	1	9
11 – MC	13	14	17	3	22	5	22	0	8
12 - KD	12	13	17	4	19	2	20	1	7
13* - SK	15	13	19	6	20	1	22	2	9
14 * - MC	7	6	14	8	17	3	20	3	14
15 * - SS		5	15	10	18	3	19	1	14
16 - KD	11	13	21	8	22	1	22	0	9
17 – SK		10	17	7	20	3	20	0	10
18 – MC	11	11	17	6	18	1	19	1	8
19 – KD	7	7	14	7	18	4	20	2	13
20 - SK		9	17	8	left		left		

Total 20 / Maori 3 15% (School 10%) / Male 11 55% / Female 9 45%

**Comments T4, 2010**

19/20 of the target students reached the target (NS – L17). All students from the 2009 cohort have now reached the target and their expected NS level.

List C - Students identified as a risk of not achieving in reading through testing after 2years at school T4, 2009, T1, 2010 – Target L21

Name * 09 Cohort students	Level T1, 2010	Level end T2, 2010	Diff	Level end T3, 2010	Diff	Level T4, 2010	Diff	Diff year
1 * LH	20	Left		Left		Left		
2 LH	20	21	1	23	2	24	1	4
3 SSU	19	20	1	23	3	23	0	4
4 *SSU	20	21	1	23	2	23	0	3
5 SSU	19	23	4	23	0	24	1	4
6 SS	13	19	6	21	2	22	1	9
7 * SS	15	23	8	23	0	24	1	9
8 SS	15	19	4	20	1	22	2	7
9 * SS	15	19	4	20	1	22	2	7
10 SS	13	19	6	23	4	24	1	11
11 SS	13	19	6	20	1	22	2	9
12 * SS	14	19	5	20	1	22	2	8
13 * MW	17	19	2	23	4	23	0	6
14 MW	9	15	6	17	2	18	1	9
15 MW	17	19	2	21	2	22	1	5
16 MW	17	18	1	21	3	21	0	4
17 * MW	17	20	3	23	3	23	0	6
18 MW	17	18	1	20	2	19	-1	2
19 MW	18	19	1	23	4	23	0	5
20 MW	18	19	1	23	4	23	0	5
21 BN	19	18	-1	21	3	22	1	2
22 BN	19	18	-1	22	4	22	0	4
23	19	Left		Left		Left		
24 SSU	20	23	3	23	0	25	2	5
25 MW	17	19	2	21	2	22	1	5
26 MW	18	19	1	23	4	23	0	5
27	17	19		23	4	22	-1	6
28	18	20		23	3	23	0	5
29	22	19		23	4	23	0	1

Total 29 / Maori 3 10% (School 10%) / Male 20 69% / Female 9 31%

**Comments T4, 2010**

All 6 students from the 2009 cohort have now reached the target, (Expected NS for their level). 27/29 students reached the target goal. Of the 2 who did not reach the target one is an ESOL student and the other has specific learning difficulties.

## Annual Student Achievement Target – 2010 – Y5 - 6

<b>Strategic Goal</b> – Kapanui Students will achieve at or above expected levels for their age – Writing / Spelling / Reading / Numeracy				
<b>Defining the Goal-</b>				
Kapanui vision statements clearly highlight the foundation skills of literacy and numeracy as vital for our students to develop – “That all students not only need to achieve high levels of competency in literacy and numeracy but to take advantage of this they need to develop the “key competencies’. That each underpins the other and together these are the ‘foundations’ of learning.”				
<b>Target Group 5 – students in Y5 -6</b>				
<b>Focus Area – Knowledge, Recall Basic Facts</b>		<b>Gender - both</b>		<b>Ethnicity - all</b>
<b>Year Groups – Year 5 and 6</b>				
Historical Position	Achievement Target 2010	Current Position Feb 2010	Position Dec 2010	Recommendations 2011
Testing using the Banks test <b>At Risk</b> <ul style="list-style-type: none"> <li>All students at stage 3</li> <li>All students at Stage 4</li> <li>Year 7 and 8 students at Stage 5</li> </ul> <b>Of Concern</b> <ul style="list-style-type: none"> <li>Year 6 students at Stage 5</li> </ul>	To reduce students considered at risk or of concern to 15% (18 or 19 students)	36 Year 5 or 6 students – 30% (36/122) considered to be at risk or of concern based on end of 2010 year expectations		

At Risk	Concern	At Expectation	Above Expectation
---------	---------	----------------	-------------------

### **Specific Target Group – 5 – Y5-6**

Name	Level T1, 2010	Level end T2, 2010	Level end T3, 2010	Level end T4, 2010
1 AO 6	Stage 3	Stage 4	4	6
2 ES 4	Stage 3	Stage 4	6	7
3 ES 4	Stage 3	Stage 6	6	6
4 ES 5	Stage 3	Stage 6	5	6
5 ES 5	Stage 3	Stage 4	6	6
6 ES 5	Stage 3	Stage 4	Ab	6
7 AO 5	Stage 4	Stage 5	6	5
8 AO 5	Stage 4	Stage 6	6	6



9 AO 5	Stage 4	Stage 5	6	6
10 AO 5	Stage 4	Stage 5	Ab	6
11 AO 6	Stage 4	Stage 4	6	5
12 AO 5	Stage 4	Stage 4	5	5
13 ES 5	Stage 4	Stage 6	6	6
14 ES 5	Stage 4	Stage 5	Ab	6
15 ES 4	Stage 4	Stage 5	5	5
16 ES 5	Stage 3	Stage 4	5	6
17 ES 5	Stage 4	Stage 6	6	6
18 DS 5	Stage 4	Stage 5		
19 DS 6	Stage 4	Stage 5	6	7
20 DS 6	Stage 4	Stage 5	6	6
21 WP 5	Stage 4	Stage 6	5	5
22 WP 6	Stage 4			
23 WP 5	Stage 4	Stage 7	6	7
24 RM 5	Stage 4	Stage 5	6	5
25 RM 6	Stage 4	Stage 5	5	6
26 DS 6	Stage 5	Stage 6	7	7
27 DS 6	Stage 5	Stage 5	6	6
28 DS 6	Stage 5	Stage 4	6	5
29 DS 6	Stage 5	Stage 6	7	7
30 WP 5	Stage 5	Stage 6	6	6
31 WP 6	Stage 4	Stage 5	6	4
32 AO 6	Stage 5	Stage 6	6	7
33 AO 6	Stage 5	Stage 7	6	
34 BM 6	Stage 4	Stage 6	6	6
35 RM 5	Stage 4	Stage 6	6	6
36 RM 6	Stage 4	Stage 4	5	5

36 Y5/6 students

**Annual Student Achievement Target – 2010 – Y7-8**

<b>Strategic Goal – Kapanui Students will achieve at or above expected levels for their age – Writing / Spelling / Reading / Numeracy</b>				
<b>Defining the Goal-</b> Kapanui vision statements clearly highlight the foundation skills of literacy and numeracy as vital for our students to develop – “That all students not only need to achieve high levels of competency in literacy and numeracy but to take advantage of this they need to develop the “key competencies’. That each underpins the other and together these are the ‘foundations’ of learning.”				
<b>Target Group 6 – students in Y7-8</b>				
<b>Focus Area – Knowledge, Recall Basic Facts</b>		<b>Gender - both</b>		<b>Ethnicity - all</b>
<b>Year Groups – Y7 and Y8</b>				
Historical Position	Achievement Target 2010	Current Position Feb 2010	Position Dec 2010	Recommendations 2011
Testing using the Banks test <b>At Risk</b> <ul style="list-style-type: none"> <li>Year 7 / 8 students at stage 3 or 4</li> </ul> <b>Of Concern</b> <ul style="list-style-type: none"> <li>Year 7 students at Stage 5</li> <li>Year 8 students at Stage 6</li> </ul>	To reduce students considered at risk or of concern to 10% (12 or 13 students)	30 Year 7 or 8 students – 22.3% (30/134) considered to be at risk or of concern based on end of 2010 year expectations	22 students at expectation, 4 at risk, 0 of concern	

**Specific Target Group – 6 (Y7-8)**

<b>Name</b>	<b>Stage T1, 2010</b>	<b>Stage end T2, 2010</b>	<b>Stage end T3, 2010</b>	<b>Stage end T4, 2010</b>
1 LG 7	Stage 4	Stage 6	6	6
2 LG 7	Stage 4	left	Left	Left
3 LG 7	Stage 4	Stage 6		7
4 MW 7	Stage 5	Stage 6	7	Ab
5 MW 7	Stage 5	Stage 6	7	7
6 KB 8	Stage 5	Stage 6	6	6
7 KB 7	Stage 5	Stage 6	6	5
8 KB 8	Stage 5	Stage 6	ab	7
9 DW 7	Stage 5	Stage 7	7	7
10 DW 7	Stage 5	Stage 6	7	7
11 DW 8	Stage 5	Stage 7	7	7
12 DW 8	Stage 5	Stage 7	7	7
13 DW 7	Stage 5	Stage 7	7	7
14 LG 7	Stage 5	Stage 7	7	7
15 LG 8	Stage 5	Stage 7	7	7
16 LG 7	Stage 5	Stage 7	7	7
17 DW 8	Stage 6	Stage 7	7	7
18 DW 8	Stage 6	Stage 7	7	7
19 DW 8	Stage 6	Stage 8	8	8
20 DW 8	Stage 6	Stage 7	7	7
21 KB 8	Stage 6	Stage 7	Left	Left
22 KB 8	Stage 6	Stage 7	7	7
23 KB 8	Stage 6	Stage 6	6	7
24 KB 8	Stage 6	Stage 7	7	7
25 KB 8	Stage 6	Stage 7	6	7
26 LG 8	Stage 6	Stage 7	7	7
27 MW 8	Stage 6	Stage 6	Ab	6
28 MW 8	Stage 6	Stage 6	6	6
29 MW 8	Stage 6	Stage 6	8	7
30 MW 8	Stage 6	Stage 6	7	7

Tally of Students at each stage using - Guidelines for 'End of Year Expectations'

March 2010

	RISK T1	CONCERN T1	End T2	End T2	At T2	End T3	End T3	At T3	End T4	End T4	At T4
Year 4	2	1	0	1	2	0	0	3	0	0	3
Year 5	4	13	0	4	14	0	0	18	0	0	18
Year 6	6	7	4	4	7	1	2	9	0	3	10
Year 7	3	8	0	1	9	0	0	10	0	1	9
Year 8	5	14	0	5	11	0	6	10	0	3	13
<b>Total</b>	<b>20</b>	<b>43</b>	<b>3</b>	<b>15</b>	<b>41</b>	<b>1</b>	<b>8</b>	<b>50</b>	<b>0</b>	<b>7</b>	<b>52</b>

Term 2 - 3 students absent / left

Targets November 2010

	AT RISK TARGET	AT RISK ACTUAL	OF CONCERN TARGET	OF CONCERN ACTUAL
Year 4		0	0	0
Year 5	0	0	2	0
Year 6	1	0	6	3
Year 7	0	0	3	1
Year 8	0	0	5	3
<b>Total</b>	<b>1</b>	<b>0</b>	<b>17</b>	<b>7</b>

Summary – met or exceeded the target in all year groups  
Comparison of 2011 numbers and 2010 numbers

March 2011

	AT RISK	OF CONCERN
Year 4	1	
Year 5	4	4
Year 6	4	9
Year 7	2	5
Year 8	0	6
<b>Total</b>	<b>10</b>	<b>25</b>

March 2010

	AT RISK	OF CONCERN
Year 4	2	1
Year 5	4	13
Year 6	6	7
Year 7	3	8
Year 8	5	14
<b>Total</b>	<b>20</b>	<b>43</b>